

December 2023

Volume 17/No. 4

# The Vintage Rabun Quarterly

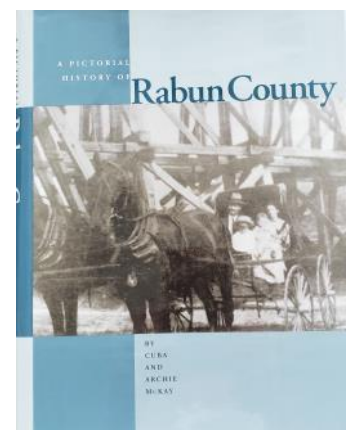
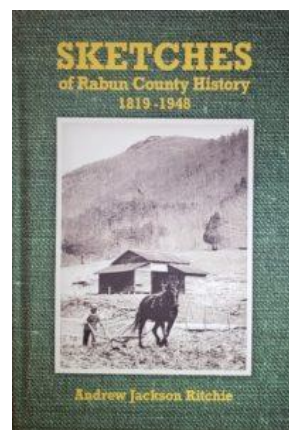
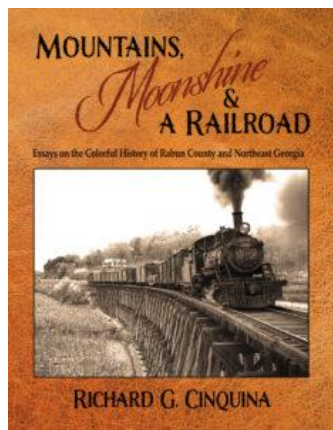
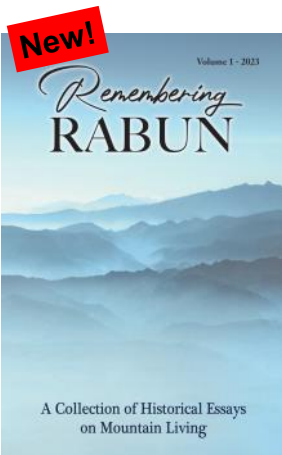
## Great Gift Ideas!

We sell several books in our museum and on our website. A few of the most popular are described below, including our newest publication, **Remembering RABUN**. Books make a great gift for anyone who loves Rabun County or loves history. They can also be passed down to future generations.

Scan the QR code to go to our website [www.rabunhistory.org](http://www.rabunhistory.org).

Click on “**Support Us**” at the top of the home page to order books or join the Historical Society or make a donation. Please think of us for your charitable giving. We appreciate your support.

You may also click on “**News**” to read more newsletters and articles.



**Remembering RABUN** is our newest publication. It is a small book, full of historical essays and many vintage photographs depicting Rabun County people and places and life in the mountains. Priced at \$9.95, **Remembering RABUN** is perfect for holiday gifts.

**Mountains, Moonshine and a Railroad** tells the always colorful, occasionally contentious and frequently humorous history of Rabun County and the surrounding area of northeast Georgia. Author: Richard G. Cinquina

**Sketches of Rabun County History** is a recent reprint of Dr. Andrew Ritchie’s comprehensive area history, first published in 1948. This work focuses in particular on the original settler families, their origins and early histories.

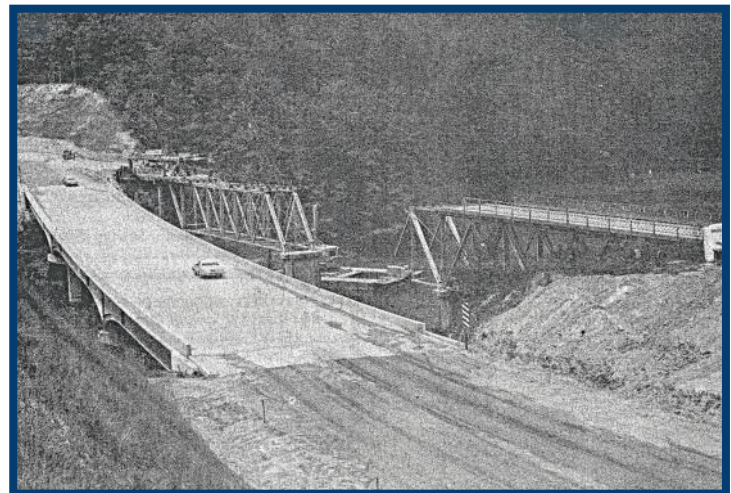
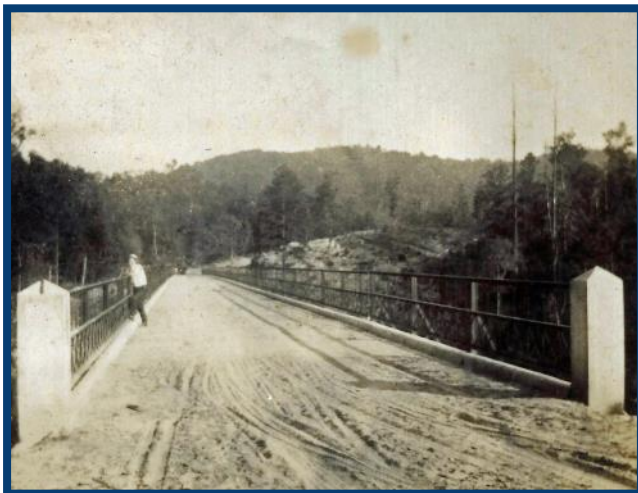
**Pictorial History of Rabun County**, an overview published in 2003. This book contains hundreds of the Society’s photos and reviews many subjects important to the county’s development, such as the Tallulah Falls Railroad, the Georgia Power dams, agriculture, and logging.



## Historic Bridges



The pride of the town of Burton was a large iron bridge crossing the Tallulah River that opened approximately 1902. The bridge was located at the point where the Tallulah River and Dick's Creek intersected before the river was dammed and the town was flooded creating Lake Burton.



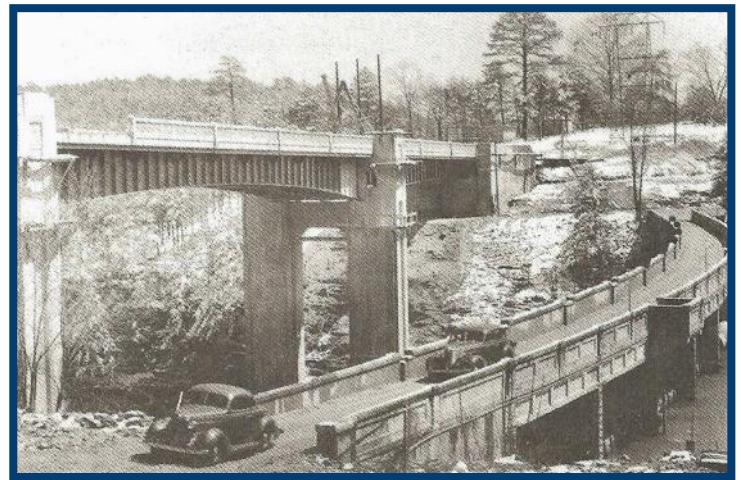
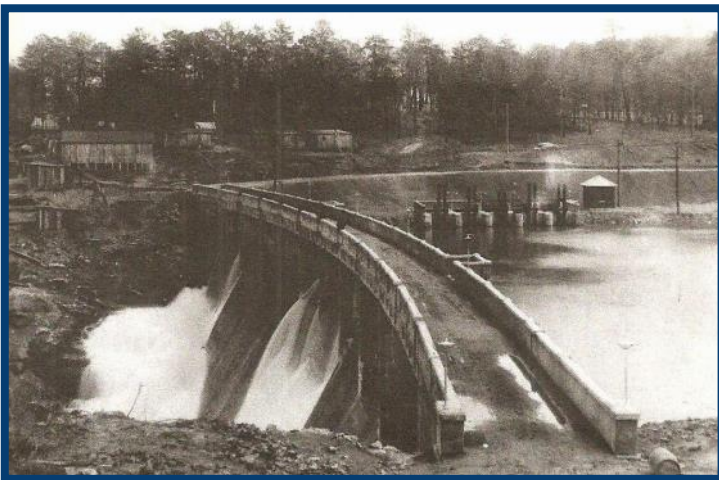
Georgia Power Company constructed a one-lane bridge across the northern end of Lake Burton at the same time the dam was constructed. The lake began filling in 1919, so the concrete piers were probably erected around 1918. The bridge was completed in 1921 after the reservoir was filled. A ferry served travelers while the lake was filling. The current two-lane bridge was constructed in 1976 to replace the original one-lane bridge.



## of Rabun County



Construction of the first iron bridge across the Chattooga River began in 1894. The bridge spanned the Chattooga on Highway 76 between Oconee County, South Carolina and Rabun County, Georgia. Prior to construction of this bridge, the only river crossing in this immediate vicinity was at Rogue's Ford. The metal truss bridge was in use until 1949 when it was replaced by a second, larger bridge at the same location. The new bridge was improved and widened in 2006-2007.



The dam at the head of Tallulah Gorge was completed in 1913. A single-lane bridge crossed the dam, but it was not until 1927 that J.E. Harvey of Tallulah Falls and R.L. Moss of Athens deeded rights of way to facilitate relocating the road to cross the river over the top of the Tallulah Falls dam. Prior to that, traffic crossed the river further up-stream on a bridge that had toll gates until 1890. A toll of twenty-five cents was collected from every conveyance. A new bridge over the gorge next to the dam was completed in 1940 and has since been improved with the widening of the highway.

Rabun County Historical Society  
81 North Church Street  
P.O. Box 921  
Clayton, GA 30525



Phone: 706-782-5292  
www.rabunhistory.org  
Email:  
rabuncountyhistory@gmail.com



- Please visit our museum and research library Wednesday through Saturday from 11:00 until 3:00.
- Group tours by appointment

## *Historical Society Membership Updates*

Welcome to our new members who have joined since  
September 2023.

### Benefactor

Robert B. Efird

### Patron

Brent Kuehne

Jill Truitt

### Family

Kenneth & Pamela Manley

Ken & Karen Nicholson

William Pipkin

### Friend

David Heald

William Henry

William Whaley Hines, Jr.

Jeff Levan

Helen Meadors

Michael Sosebee

Edward Waigand

